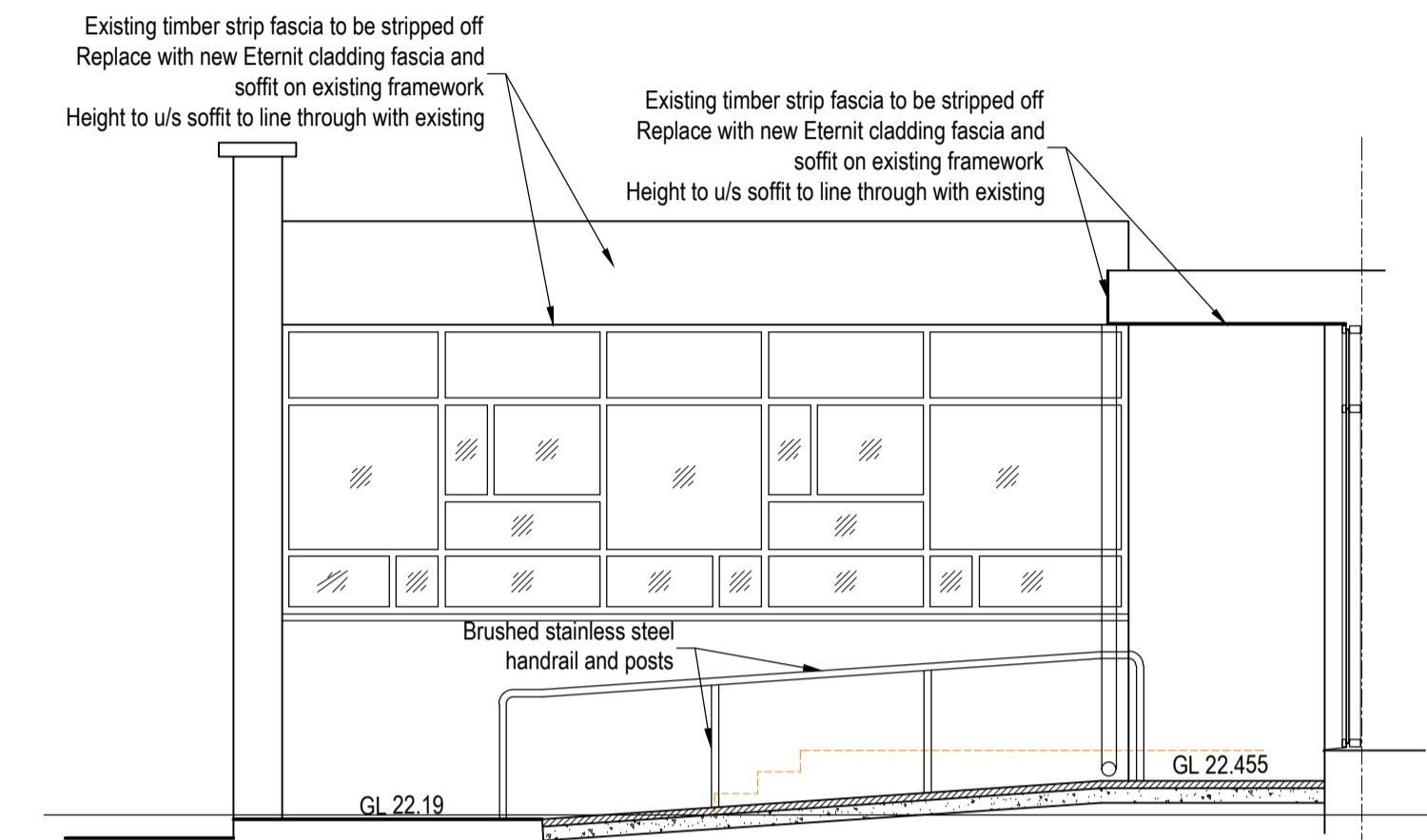
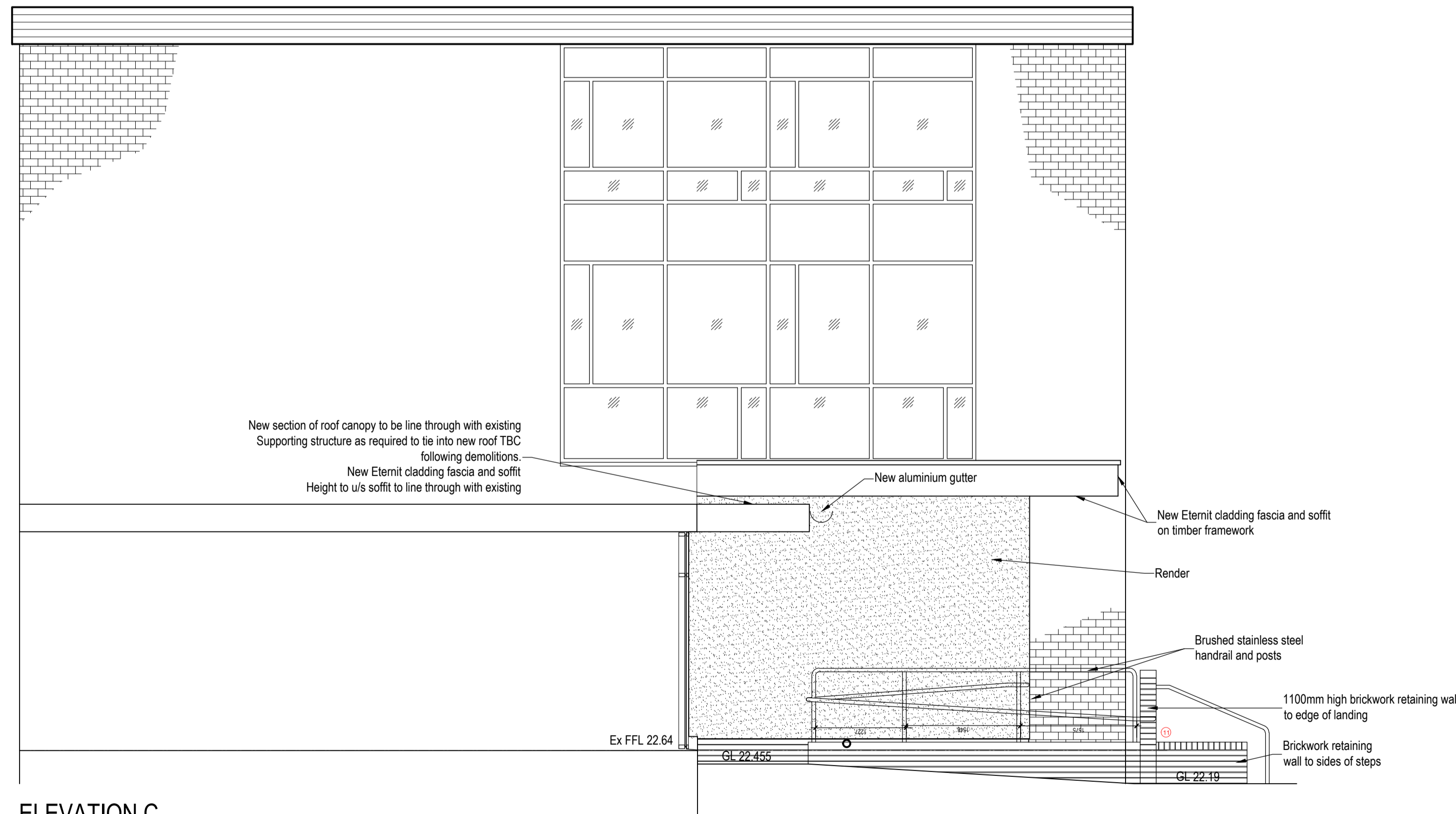


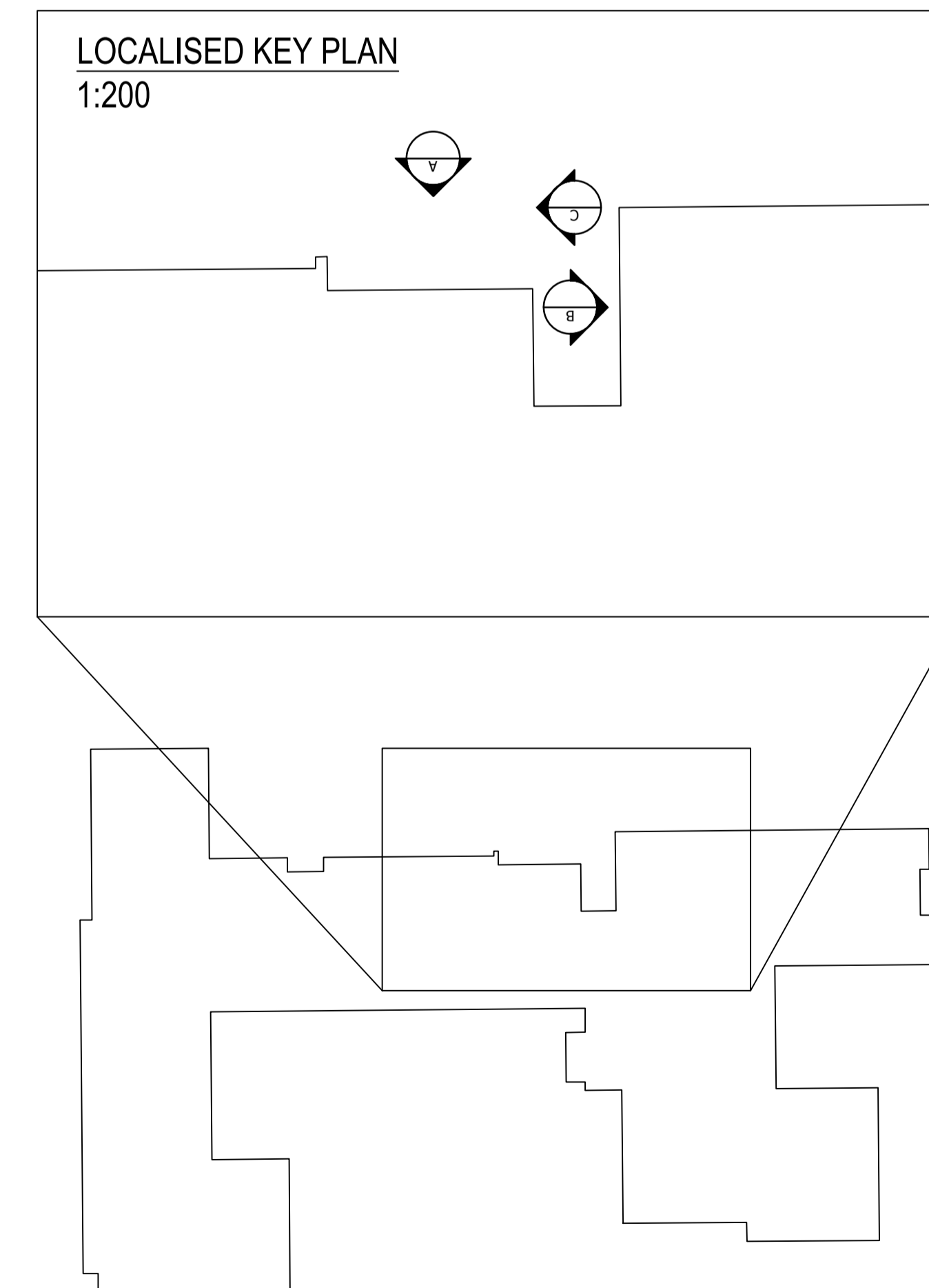
ELEVATION A
1:50



ELEVATION B
1:50



ELEVATION C
1:50



CONTEXTUAL KEY PLAN
1:500

P2	Wider Key plan added to improve context	EB	RA	12/10/2018
P1	Issue for Planning	PC	RA	17/08/2018
Rev	Description	Dm	Chk	Date

HOWARTH LITCHFIELD
4 Old Elvet, Durham, DH1 3HL. T: Durham(0191) 3849470 E: hlp@hpluk.com
16-25 Bastwick Street, London, EC1V 3PS T: (0207) 2518905 E: hpl@hpluk.com
www.howarthlitchfield.com

Copyright and all intellectual property rights remain vested in Howarth Litchfield Partnership Limited subject to the disclaimer notes embodied on this and all associated drawings and documents.

Drawing Status: PRELIMINARY APPROVAL
INFORMATION TENDER CONSTRUCTION

Stockton-on-Tees
BOROUGH COUNCIL
Big plans, bright future

Economic Growth & Development Services
Director of Economic Growth & Development
Richard McGuirk B.Eng., C.Eng., F.I.C.E.
P.O. Box 229, Kingsway House, Billingham, TS23 2YL
Tel: 01642 939399 email: egds@stockton.gov.uk

Project:
Our Lady and St Bede's
Stockton
TS19 0QH

Content:
Main Entrance Proposed Elevations

Date	14/06/2018	Dwg No.	A10861-100-07
Drawn	PC	Checked	RA
Scale	@ A1	As shown	
Rev	P1		